

# Pink Ribbon Companions II

By KN Karen Neuberger®

## Braided Love



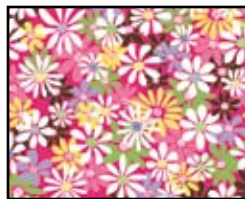
Finished size 66" x 66"



20567 G 2 ½ yard



20567 P 1 ¼ yard



20567 V 1 yard



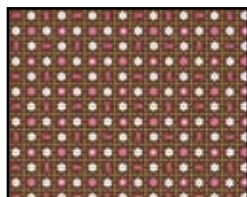
20568 A 2 ½ yard



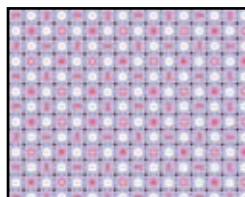
20568 V 2 ¾ yard



20569 P 1 ½ yard



25557 A 1 yard



25557 L 1 yard



20570 A 2 ½ yard



20566 PA 5 yards  
backing

## Braided Love

Quilt Designed by Susan Guzman

Skill Level: Beginner

Quilt Size: 66" x 66"

Read through the instructions completely before sewing this pattern. Pattern uses 1/4" sewn seams for accuracy, unless stated otherwise.

WOF = Width of Fabric (Typically 42")

HST = Half-Square Triangles

### Fabric Requirements and Cutting Instructions:

#20567 G (Fabric A – Green Floral) – 1 Yard:

Cut 7 strips, 4 7/8" x WOF. Then cut strips into (55) 4 7/8" squares; trim 6 of these squares to 4 1/2" and set aside for use in corners (label these blocks: A). Cut remaining 49 squares into 98 HST's.

#20569 P (Fabric B – Pink Writing) – 5/8 Yard:

Cut 2 strips, 4 7/8" x WOF. Then cut strips into (14) 4 7/8" squares; cut squares into 28 HST's.

#20568 V (Fabric C – Hot Pink Polka Dot) - 1 1/4 Yards:

Cut 7 strips, 4 7/8" x WOF. Then cut strips into (54) 4 7/8" squares; cut squares into 108 HST's.

Cut 4 strips, 1 1/2" x WOF. Piece together and cut into 2 strips of 1 1/2" x 64 1/2" for your vertical border strips.

Cut 4 strips, 1 1/2" x WOF. Piece together and cut into 2 strips of 1 1/2" x 66 1/2" for your horizontal border strips.

#20568 A (Fabric D – Brown Polka Dot) – 1 1/4 Yards:

Cut 5 strips, 4 7/8" x WOF. Then cut strips into (36) 4 7/8" squares; cut squares into 72 HST's.

Cut 7 strips 2" x WOF, then sew together for binding.

#25557 L (Fabric E - Purple Check) – 3/8 Yard:

Cut 2 strips, 4 7/8" x WOF. Then cut strips into (12) 4 7/8" squares; cut squares into 24 HST's.

#20570 A (Fabric F – Brown Ribbon) – 7/8 Yard:

Cut 3 strips, 4 7/8" x WOF. Then cut strips into (24) 4 7/8" squares; cut squares into 24 HST's.

Cut 3 Strips 4 1/2" x WOF. Then cut strips into (24) 4 1/2" squares and set aside for use in center of quilt (label these blocks: F).

#20567 P (Fabric G – Light Pink Floral) – 1/2 Yard:

Cut 3 strips, 4 7/8" x WOF. Then cut strips into (19) 4 7/8" squares; cut squares into 38 HST's.

#25557 A (Fabric H – Brown Check) – 3/8 Yard:

Cut 2 strips, 4 7/8" x WOF. Then cut strips into (9) 4 7/8" squares; cut squares into 18 HST's.

#20567 V (Fabric I – Hot Pink Floral) – 3/8 Yard:

Cut 1 strip, 4 7/8" x WOF. Then cut strip into (3) 4 7/8" squares; cut squares into 6 HST's.

Cut 1 strip 4 1/2" x WOF. Then cut strips into (6) 4 1/2" squares and set aside for use in corners (label these blocks: I).

#20566 PA (Multi-Stripe) – 5 Yards

Cut length of fabric in half and sew together for backing.

### Construct All HST Blocks Measuring 4 1/2" Square:

Match up the following pairs of HST's. With right sides of fabric together, sew a scant 1/4" seam on the diagonal; press seam toward dark fabric. Make the number of blocks specified, below.

1. Take (1) #20567G HST and (1) #20569P HST. Make 6 blocks and set aside (label these blocks: A/B).
2. Take (1) #20568V HST and (1) #20569P HST. Make 16 blocks and set aside (label these blocks: C/B).
3. Take (1) #20568V HST and (1) #20568A HST. Make 34 blocks and set aside (label these blocks: C/D or D/C).
4. Take (1) #25557L HST and (1) #20568A HST. Make 24 blocks and set aside (label these blocks: E/D).
5. Take (1) #20568A HST and (1) #20568V HST. Make 38 blocks and set aside (label these blocks: A/C or C/A).
6. Take (1) #20567G HST and (1) #20568V HST. Make 24 blocks and set aside (label these blocks: A/F or F/A).
7. Take (1) #20567P HST and (1) #20567G HST. Make 16 blocks and set aside (label these blocks: G/A).
8. Take (1) #20567P HST and (1) #25557A HST. Make 12 blocks and set aside (label these blocks: G/H).
9. Take (1) #20568V HST and (1) #25557A HST. Make 6 blocks and set aside (label these blocks: C/H).
10. Take (1) #20567V HST and (1) #20569P HST. Make 6 blocks and set aside (label these blocks: I/B).
11. Take (1) #20568V HST and (1) #20570A HST. Make 14 blocks and set aside (label these blocks: C/F).
12. Take (1) #20568A HST and (1) #20567G HST. Make 14 Blocks and set aside (label these blocks: D/A).
13. Take (1) #20570A HST and (1) #20567P HST. Make 10 blocks and set aside (label these blocks: F/G).

Total number of blocks (includes the 4 ½" Block A's, Block F's, and Block I's) is 256.

### Construct Quilt Top:

This quilt consists of four quadrants. There are 8 rows of 8 blocks that make up each quadrant. They will be known as Q1, Q2, Q3, and Q4 (see Image 1).

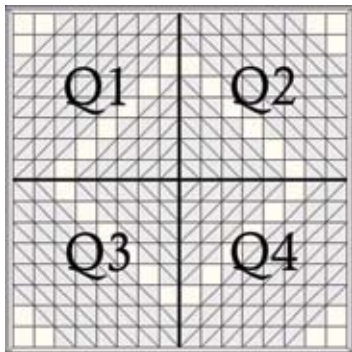


Image 1

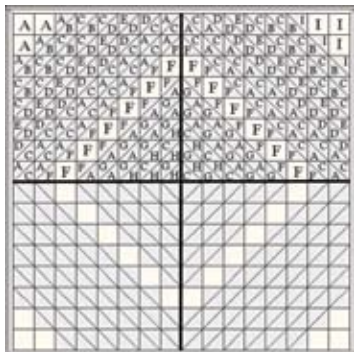


Image 2

As you construct your quilt top, keep in mind that Q1 and Q4 are constructed using the exact same placement of fabrics. Also, Q2 and Q3 are constructed using the exact same placement of fabrics.

Before sewing your quilt top together, refer to diagram for placement of fabric squares (A, F, and I) and fabric half-square triangles (see Image 2).

Sew Together One Row Each for Q1 and Q4, Left to Right:

First row blocks: A, A, A/B, C/B, C/D, E/D, D/C, A/C;  
press seams.

Second row blocks: A, A/B, C/B, C/D, E/D, D/C, A/C,  
A/F; press seams.

Third row blocks: A/B, C/B, C/D, E/D, D/C, A/C, A/F, F;  
press seams.

Fourth row blocks: C/B, C/D, E/D, D/C, A/C, A/F, F,  
F/A; press seams.

Fifth row blocks: C/D, E/D, D/C, A/C, A/F, F, F/A, G/A;  
press seams.

Sixth row blocks: E/D, D/C, A/C, A/F, F, F/A, G/A, G/H;  
press seams.

Seventh row blocks: D/C, A/C, A/F, F, F/A, G/A, G/H,  
C/H; press seams.

Eighth row blocks: A/C, A/F, F, F/A, G/A, G/H, C/H,  
G/H; press seams.

Sew all 8 rows together for Q1 and Q4; press seams and set aside.

Sew Together One Row Each for Q2 and Q3, Left to Right (remember: the diagonal of the blocks in these quadrants face the opposite way of Q1 and Q4):

First row blocks: C/A, D/A, E/D, C/D, C/B, I/B, I, I;  
press seams.

Second row blocks: C/F, C/A, D/A, E/D, C/D, C/B, I/B, I;  
press seams.

Third row blocks: F, C/F, C/A, D/A, E/D, C/D, C/B, I/B;  
press seams.

Fourth row blocks: F/G, F, C/F, C/A, D/A, E/D, C/D,  
C/B; press seams.

Fifth row blocks: A/G, F/G, F, C/F, C/A, D/A, E/D, C/D;  
press seams.

Sixth row blocks: A/C, A/G, F/G, F, C/F, C/A, D/A, E/D;  
press seams.

Seventh row blocks: H/G, A/C, A/G, F/G, F, C/F, C/A,  
A/D; press seams.

Eighth row blocks: H/C, H/G, A/C, A/G, F/G, F, C/F,  
C/A; press seams.

Take all 4 completed quadrant sections (Q1, Q2, Q3, and Q4), layout in order, and sew together:

Sew Q1 to Q2, sew Q3 to Q4. Sew these two sections together to complete the center of your quilt top.

Finish up the quilt top with your #20568V 1 ½" border strips.

Sandwich quilt top with batting and #20566 PA backing. Quilt the top, adding #20568A as your pieced binding.

*While all possible care has been taken to ensure the accuracy of this pattern, we are not responsible for printing errors or the way in which an individual work varies.*